

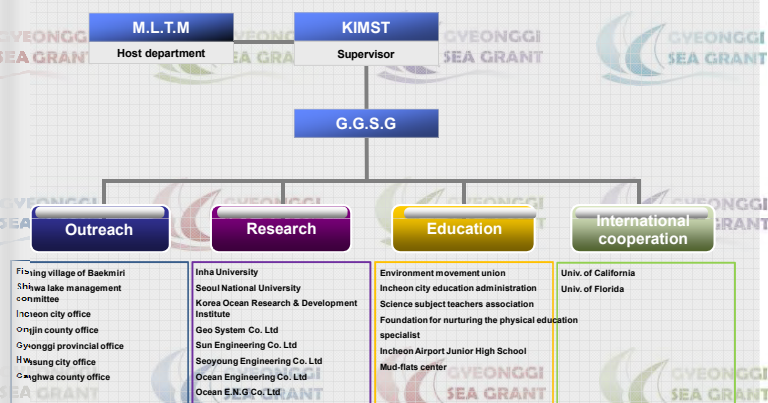
Introduction of GGSG

Overview

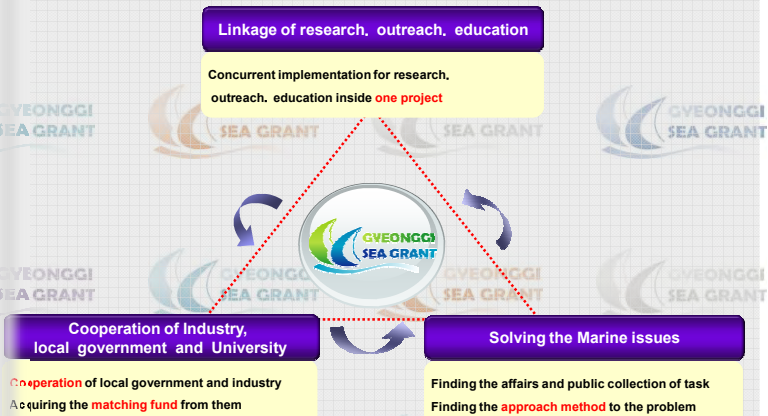
- Initiation** : February 2007
- Functional scope** : Gyeonggi Area
(Seoul, Incheon and Gyeonggi province)
- Host organization** : Inha University



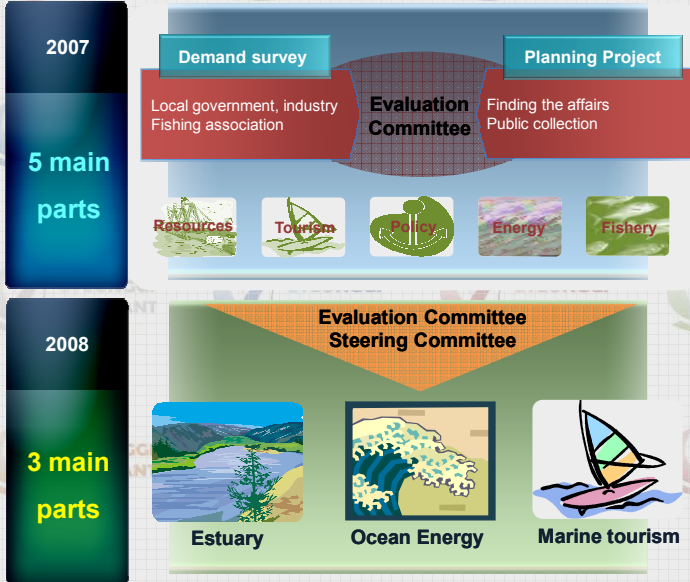
Status of Network



Strategic Vision



Main parts



Environmental factors

Marine tourism

- 5 days working per a week
- Saturation of the inland tourism
- Located at the capital area
- Holding the 'Gyeonggi international Boat show'

Estuary

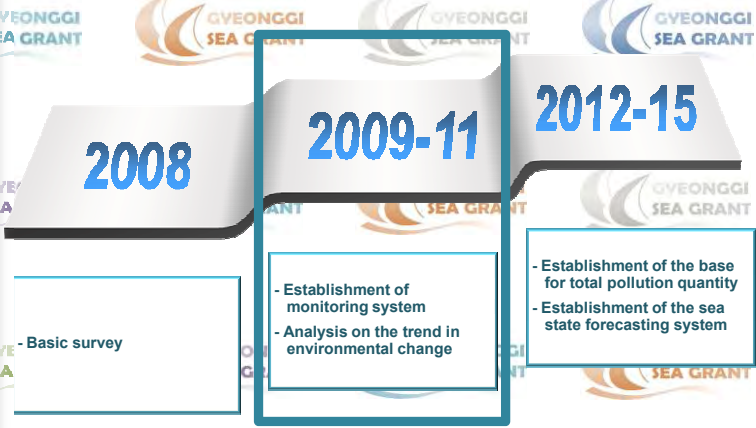
- Movement for the 4 major rivers revive in Korea
- National large scale coast development plan
- Lack of the basic data for the coastal estuary

Ocean energy

- Low carbon green growth which is a new paradigm of new government
- Increase of the environment damage due to the climate change
- Increase of the necessity for the new recyclable energy
- Gyeonggi region has a geographical advantage as it is located in the west coast

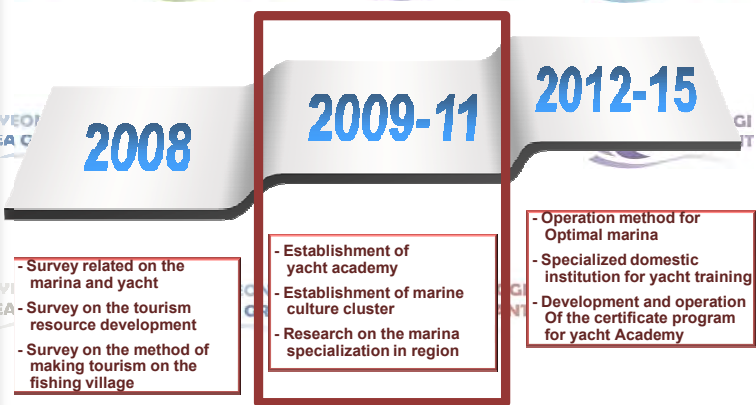
Introduction of GGSG

Strategy Goal of Estuary



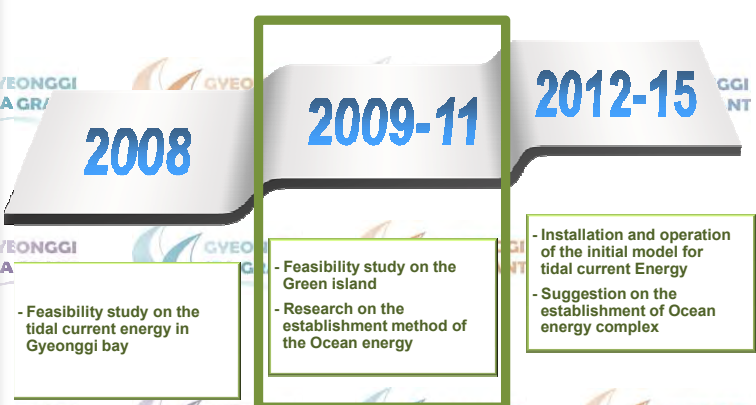
- Registration of the microorganism at the ecosystem of estuary in Gyeonggi bay-Han river
- Development of the marine observation equipment for Gyeonggi bay-Han river
- Establishment of the integral management system of marine observation data
- Establishment on the forecasting system of oceanic current in Gyeonggi bay- Han river

Strategy Goal of Marine Tourism



- Establishment of the infrastructure of yacht academy
- Research on the cluster model for the program execution of marine leisure culture
- Establishment on the promotion method of the marine leisure for the activation regional economy
- Development of yacht contents for the activation of the marine leisure in Gyeonggi region

Strategy Goal of Ocean Energy



- Feasibility study considered the regional characteristics
- Survey on the area of application for Ocean energy
- Survey on the road network, transportation method inside the island
- Survey on the fishing boat and other ships
- Survey on the similar cases in domestic and foreign
- Survey on the feasibility for the link of research, education, tourism program